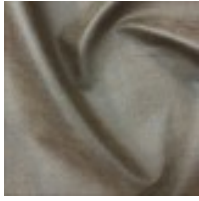


Soft Leather Look Fabric

**Product codes:**

Reference: EUF426B48

Product price:

£ 5.99 tax included

Product attributes:

Colour: Black 426, Chocolate 426, Chestnut 426

Type: Fabric, Order Sample, Thread

Product short description:

An extremely SOFT look faux leather. This leatherette is one of the most soft feel fabric out there to give the best performance in very high demanding environments. It has a polyurethane on the face end and a beautiful poly cotton brushed woven on the back.

137cm wide

Soft Feel

Applications:

Seating

Furnishings

Health club fitness equipment

Upholstery

Theater seating upholstery

Retail seating